



**WA SBCTC + EVERFI
Partnership Review**

July 7th, 2021

The background of the slide is a solid orange color. On the left side, there is a semi-transparent image of a desk setup. It includes a white pot with green plants, a black pen, and a spiral-bound notebook. The word "Agenda" is written in large, white, sans-serif font over the orange background.

Agenda

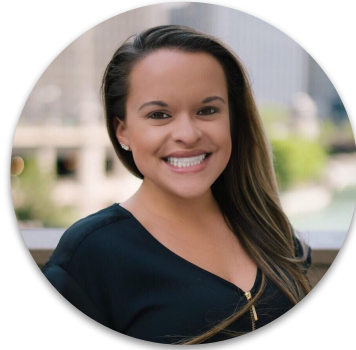
1. Introductions
2. Review of Goals
3. Review of Usage
4. Data Insights
5. Next Steps



EVERFI

Introductions

Your EVERFI Account Manager!



Holly Peterson

Senior Account Manager

E: hpeterson@everfi.com

P: 214-941-0920

[Schedule time on my calendar](#)



CAMPUS PREVENTION NETWORK

powered by EVERFI

Better, Together.

Solutions

- Proven-effective prevention programs
- Real-time data & powerful analytics
- Peer, national, and custom benchmarks
- Comprehensive strategy assessments

Insights

- Webinars and publications from renowned thought leaders
- Monthly newsletter with prevention resources and legislative updates
- Case studies from leading campuses

Connections

- Access to our Annual CPN Summit
- Peer networking at industry events
- Focus groups and feedback forums



cpn
2021 SUMMIT

EVERFI

EVERFI

2021 CPN Summit



Student Success:

Bringing Together Agenda-Setters and Change-Makers to Shape the Future of Higher Education

TUESDAY, JULY 13

Enrolment, Student Engagement, Academic Success

12:30 PM	Opening Remarks
12:40 PM	Keynote Jeff Selingo
1:20 PM	Break
1:30 PM	Student Success Plenary <i>Brand Value and Well-being: Why Prevention Work is Central to Both Student and Institutional Thriving</i>
2:00 PM	Conversation with Experts MWB AOD
2:30 PM	Break
2:40 PM	Workshop Just a Few Clicks: Insights that Bring Your Data to Life
3:25 PM	Closing Remarks

THURSDAY, JULY 15

Retention, Career Readiness

12:30 PM	CPN Seal of Prevention Ceremony
12:40 PM	Keynote Dr. Michael Sorrell
1:20 PM	Break
1:30 PM	Student Success Plenary <i>Cultivating Global Citizens: How Safety, Belonging and Engagement Drive Long-term Success</i>
2:00 PM	Conversation with Experts DEI SAP
2:30 PM	Break
2:40 PM	Workshop Just a Few Clicks: Insights that Bring Your Data to Life
3:25 PM	Closing Remarks

WA SBCTC & EVERFI

Vision of Success

What is our joint mission?



COMMUNITY AND
TECHNICAL COLLEGES

Washington State Board

Partnership Objectives

EVERFI Solution

Measurements of Success

Milestones

Configure, deploy, and track student training through EVERFI's online platform.

Foundry Platform and courses

- Utilization of course configurations on Foundry
- Achieve **XX%** completion rate for student courses

- Successful Fall 2021 launch
- Continued use of online courses

Configure, deploy, and track employee training through EVERFI's online platform

Foundry platform and courses

- Utilization of course configurations on Foundry
- Achieve **XX%** completion rate for student courses

- Successful Fall 2021 launch
- Continued use of online courses

Impact on community aligned with prevention best practices and the evidence base

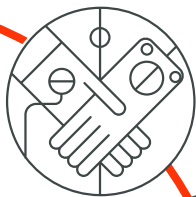
EVERFI courses and data

- Knowledge gains
- Engagement with CPN prevention tools and resources

- Launch of courses in two parts
- Utilization of Impact Report data in spring 2022

A Partnership that Makes a Difference

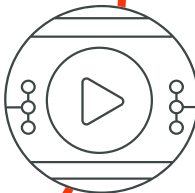
Impact and Insights at the Washington State Board for Community & Technical Colleges



6
Years of Partnership



37,016
Learners Reached
Started courses!



27
Courses Launched



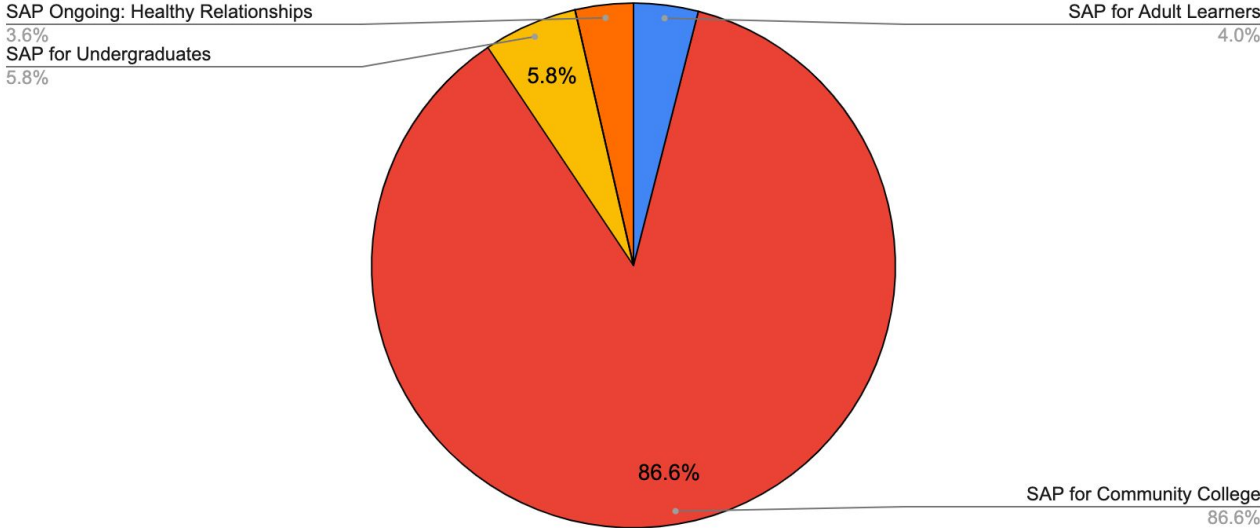
Engagements in EVERFI
Professional Development

28
Schools migrated to Foundry

- 23,478 student learners
- 13,538 employee learners
- 5 Student courses
- 22 Faculty/Staff courses
- 1 Summit Attendee - Clover Park Technical College
- Webinars, onsites, national conferences, whitepapers

Student Courses Launched

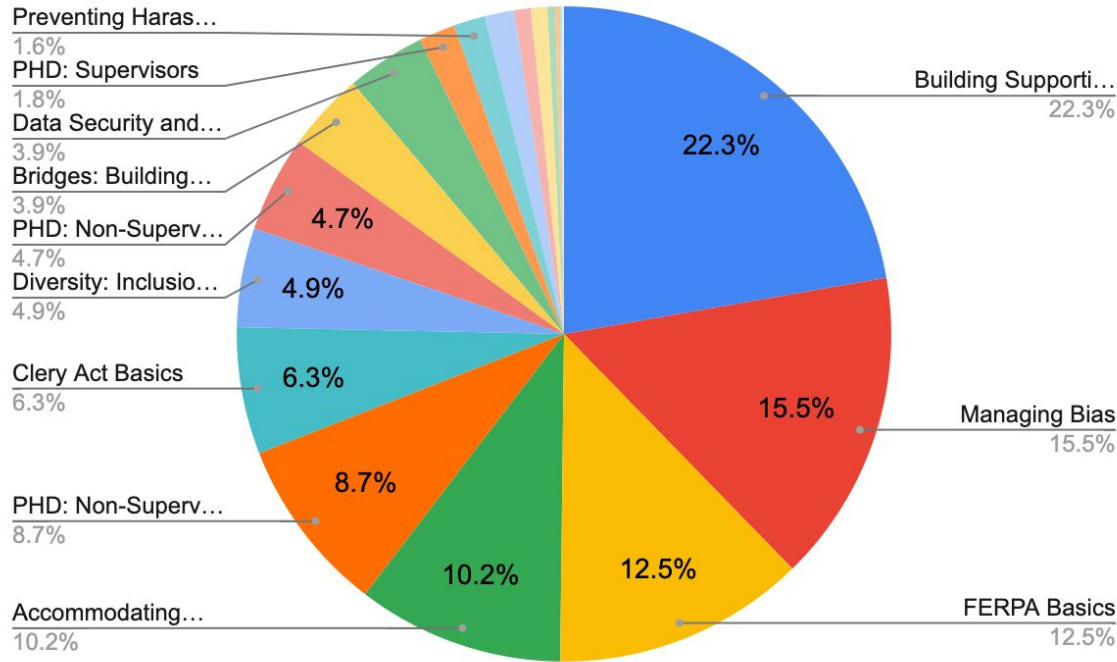
131,734 Total Assignments



- SAP for Community College
114,115
- SAP for Undergraduates
7,632
- SAP for Adult Learners
5,253
- SAP Ongoing: Healthy Relationships
4,714
- Staying Healthy in a Changing Environment for Students on Campus
20

Employee Courses Launched

40,771 Total Assignments



- Building Supportive Communities: Clery Act and Title IX - 9072
- Managing Bias - 6300
- FERPA Basics - 5089
- Accommodating Disabilities (EDU-US) - 4164
- PHD: Non-Supervisors - 3534
- Clery Act Basics - 2553
- Diversity: Inclusion in the Modern Workplace - 1997
- PHD: Non-Supervisors with Title IX/Clery Module - 1932
- Bridges: Building a Supportive Community - 1586
- Data Security and Privacy - 1585
- PHD: Supervisors - 734
- Preventing Harassment and Discrimination: Supervisors with Title IX/Clery Module - 633
- Hazard Communication (US) - 592
- Bridges | Taking Action - 334
- Social Media and Your Job - 334
- Bloodborne Pathogens - 160
- Injury & Illness Prevention - 90
- Drugs and Alcohol at Work - 44
- HIPAA Basics (US) - 28
- Recognizing Drug & Alcohol Abuse - 8
- GDPR Training - 2

The Seal: Fast Facts



The CPN Seal of Prevention

A designation given to institutions that demonstrate a commitment to comprehensive, evidence-based digital prevention strategies on issues of safety, well-being, and inclusion.

Setting the Standard

- Seal criteria align technology metrics with evidence-based prevention principles
- Establishes guidelines for discerning quality online prevention education and implementation practices

Elevating Visibility

- Clear mark of distinction sets apart leading campuses
- Connects prevention to key institutional outcomes
- External validation on college matching sites drives enrollment

Key Components of Campus Prevention Network Seal of Prevention

Meaningful

Visible

Defensible

Rigorous

Agnostic

Disruptive

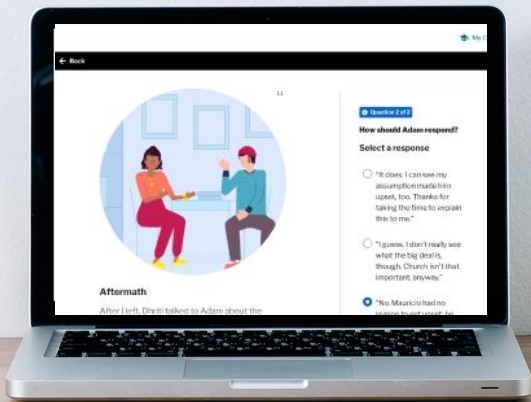
Just Launched! Diversity, Inclusion & Belonging Courses

What's Included:

- Course for Students
- Course for all Faculty & Staff
- Course for Supervisors & Leaders

Course Length: 30-40 minutes each

Languages at Launch: English



Key Benefits



Skill-Building

Empower learners with skills needed to contribute to a positive campus community.



Flexible

Assign faculty & Staff the entire course or individual modules over time.



Leadership Track

Help institutional leaders build the necessary skills to cultivate a positive work environment.



Rich Insights

In-depth surveys provide actionable data on course impact and community climate.

Course Topics

Students

- Identity Defined
- Identity Conflicts
- Power & Inequality
- Being an Ally
- Self Care



Faculty & Staff

- Identity Conflicts
- Being an Ally
- Creating an Inclusive Workplace
- Inclusion Strategies
- Intersectionality

Leaders

- Dignity & Civility in the Workplace
- Invisible Disabilities
- Power & Inequality
- Language Diversity
- Tolerance & Acceptance

Support a Healthy Minded Campus

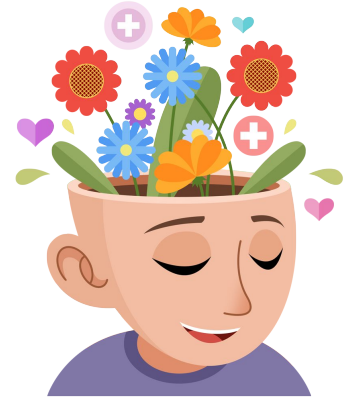
Provide faculty & staff with information to navigate personal & community wellness

EVERFI Elevate Mental Well-Being for Faculty & Staff

Learners will build their knowledge of foundational concepts related to strengthening their mental well-being and practice self-care and self-efficacy skills, and give them the tools to develop confidence and take action to support their mental health. Ultimately, help adult learners understand mental well-being, common mental health changes, when and how to seek help for themselves and others.

Topics Include:

- Mental Well-Being Basics
- Managing Mental Health Challenges
- Developing Resilience
- Supporting Loved Ones with Mental Health Challenges
- Building Strengths & Developing Motivation
- Strategies for Stress Management



Next Steps

