

# IMS Global Learning Consortium

Contributing Membership

February 2021



# INTRODUCTIONS

## Higher Education Team



**Sandra DeCastro**  
Vice President  
Community Programs  
sdecastro@imglobal.org



**Cary Brown**  
Director  
Higher Ed. Programs  
cbrown@imglobal.org



**Kelly Hoyland**  
Institutional Prog. Manager  
Higher Ed. Programs  
khoyland@imglobal.org



# Over 20 Years of Learning Impact

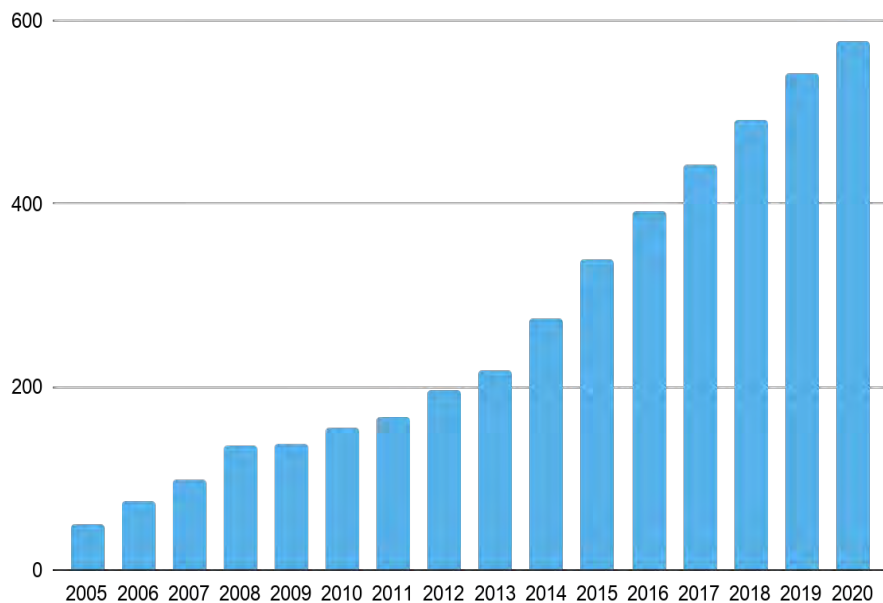
We are K-12, higher education, corporate learning, government, and edtech solution providers.

IMS members are united by a passion to continuously improve educational experiences so that every learner can make a difference in the world.

Together, we are shaping the future of digital teaching and learning.

# IMS is a Uniquely Effective Collaboration

## IMS Member Growth 2005-2020



- **570+** member organizations headquartered in **27** different countries
- **6,500+** member representatives in the IMS community
- **100+** leading higher education institutions, state/national systems, and education associations
- **95+** leading K-12 districts and state/government agencies
- **380+** edtech solutions and corporate learning providers



# INSTITUTIONAL PRIORITIES

How can IMS Global Help?

- What are your top priorities at the moment?
- What types of integration are taking place?
- What platforms and tools are you using?



# CONTRIBUTING MEMBERSHIP

## Power of One Unified Ecosystem

- Access to Institutional Meetings and Resources
- Access to Technical Workgroups and Resources
- Joint Marketing Activities
- Participation in the HED Institutional Leadership Board
- One complimentary registration to each of the quarterly meetings
- Strategy Meeting with IMS Staff Member(s)
- Access to Developer Resources and Certification
- Technical Support to Implement Standards
- Access to IMS Logo and Approved Trademarks
- Member-Only Communications



# GETTING INVOLVED

Together, We Are a Force for the Good of Education

## End-User Leadership Groups

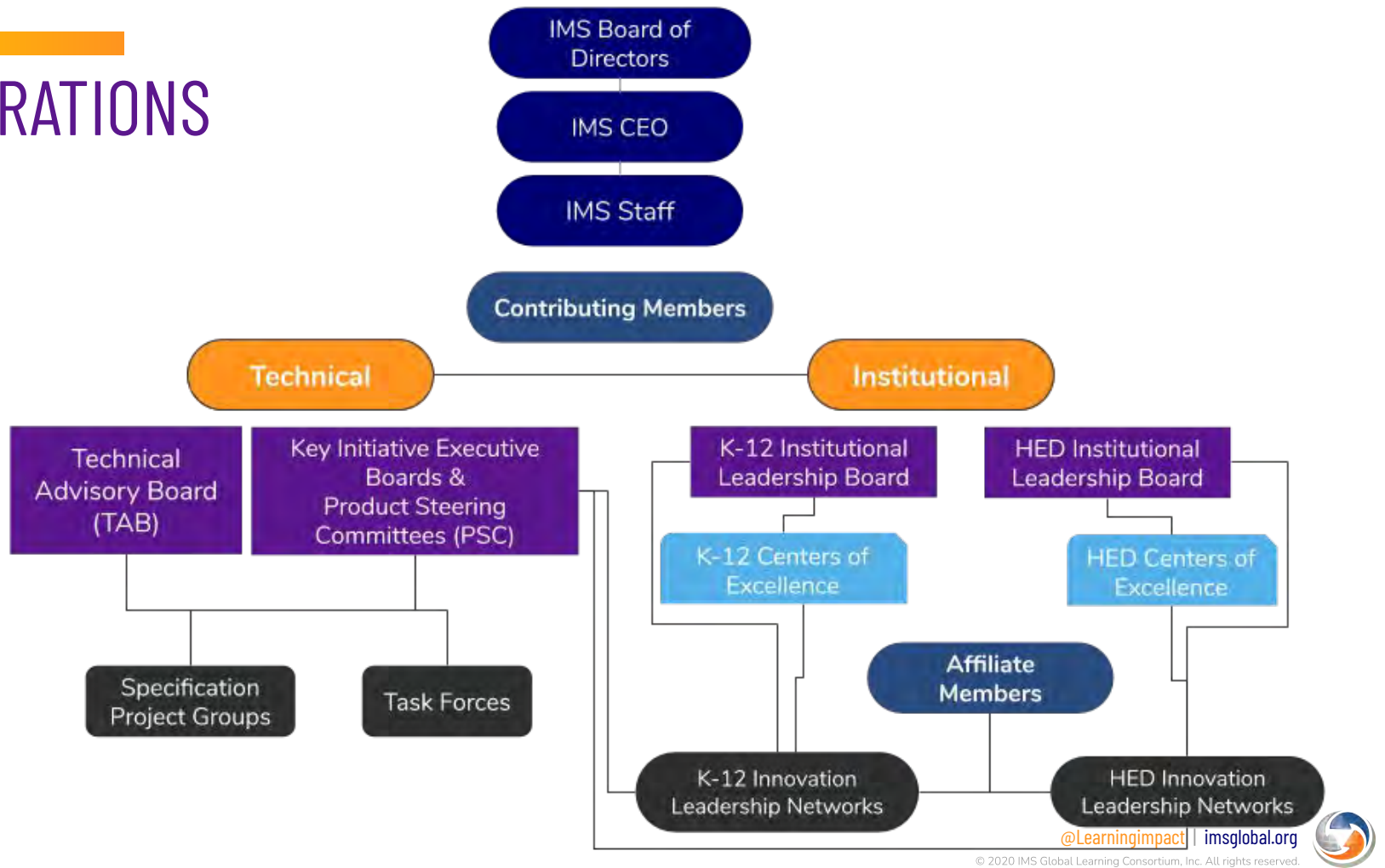
- Innovation Leadership Networks (ILNs)
  - Adaptive Learning
  - Educational Data & Analytics
  - K-20 Accessibility
  - Digital Credentials
  - LTI Advantage
  - Chief Academic & Technology Officers
- Higher Education Institutional Leadership Board

## Technical Work

- Work Groups/ Project Groups: Work on new specification development
- Task Forces: Small groups that work on a particular small area and report back to the work group or start work
- Product Steering Committees: Work on evolution and timing of the standard based on market needs



# OPERATIONS





# Accelerating Digital Transformation

Improving Outcomes for Every Student's Success

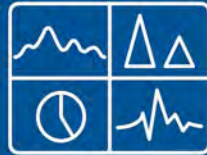
## Build a Foundation

Build **equity** with a trusted, seamless plug-and-play digital ecosystem



## Enhance Learning

Increase **equity** with personalized learning and build learner **agency** with actionable data



## Recognize Achievement

Add even more **equity** by recognizing learner **mastery** and accomplishments, tracking competencies and providing for **flexible pathways**



Improving Technology Usage and Impact while Reducing Integration Challenges

# IMS Certification and Product Directory

Enabling secure and interoperable digital learning ecosystems

The IMS community-developed and governed certification process takes the guesswork out of product interoperability to help institutions achieve a seamless, plug-and-play digital learning ecosystem.

## IMS Certification Numbers

- 4,700+ Current Certified Products
- 4,000+ Products Vetted for Data Privacy
- 705 Individual Certifications in 2020 (to date)
- 303 Unique Products in 2020 (to date)

The IMS Product Directory at [imscert.org](https://imscert.org) shows all certified products, which are also vetted for privacy to give users insight into supplier policies on sensitive student data.

## Ready. Set. Certified.

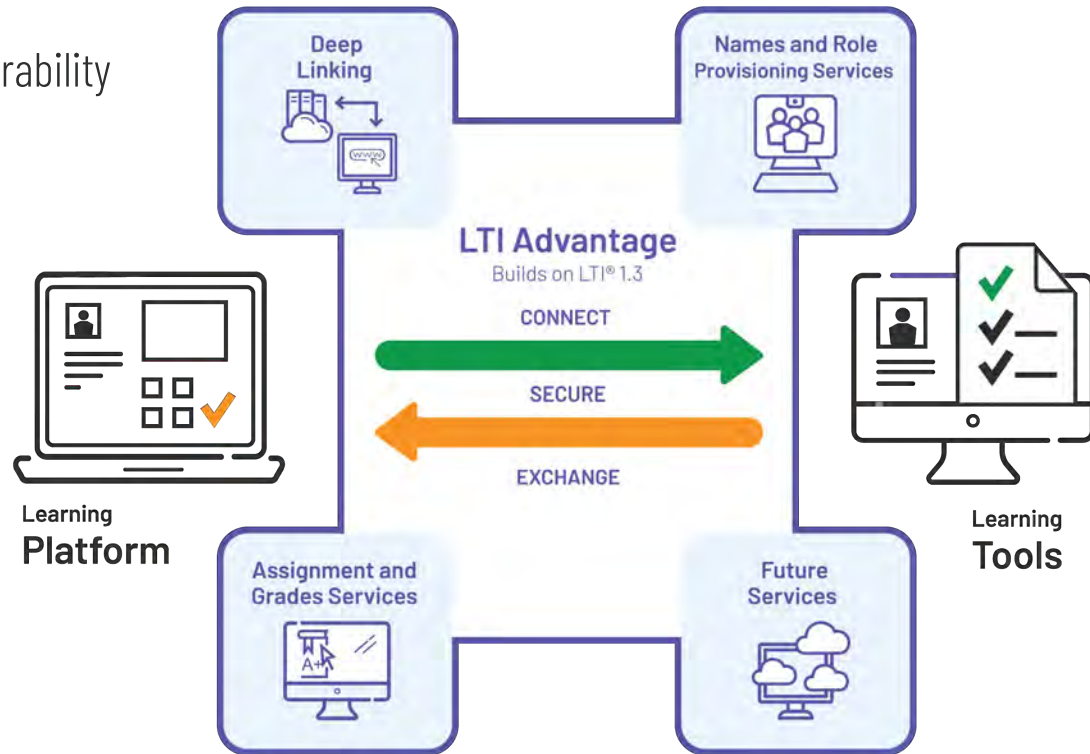
IMS certification is a benefit of membership. We provide the resources and support to make your implementation go smoothly. Get started at [imglobal.org/get-ims-certified](https://imglobal.org/get-ims-certified).



# LTI ADVANTAGE

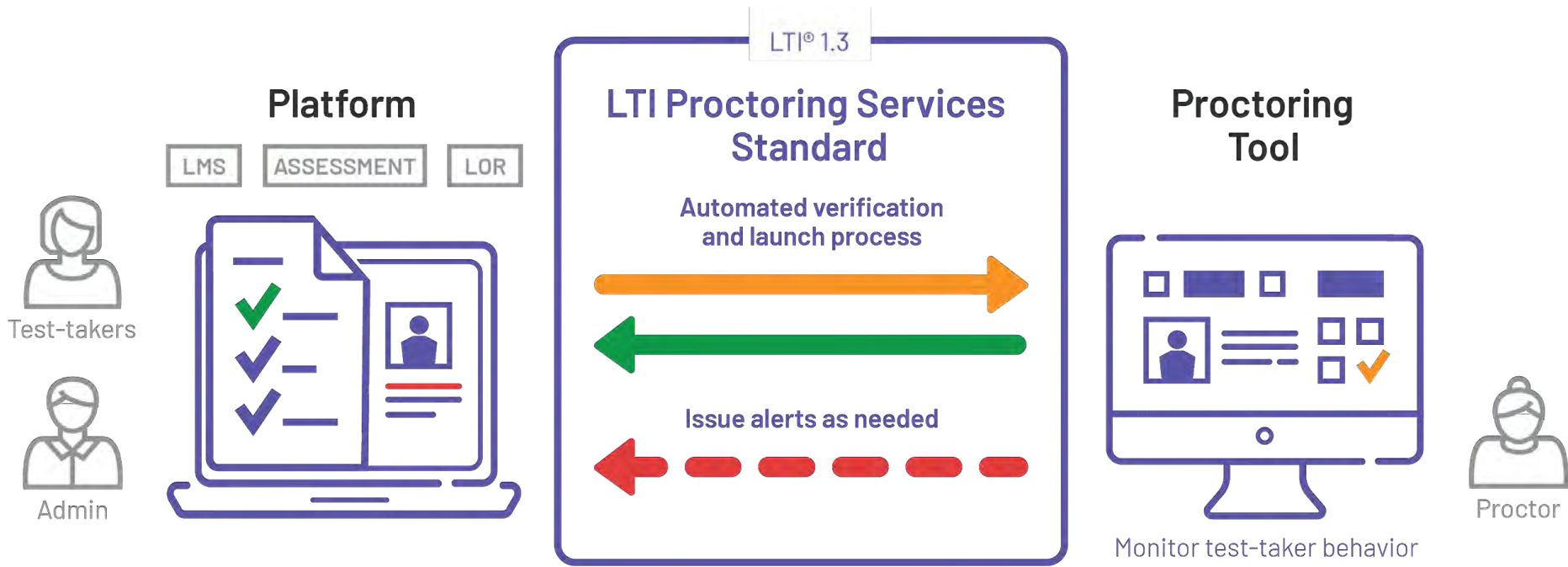
Building on the core Learning Tools Interoperability

- Package of services that add new features to enhance the integration of any tool with any LMS
- Feature services are:
  - Names and Role Provisioning Services
  - Deep Linking
  - Assignment and Grade Services.



# LTI PROCTORING SERVICES

Ensures academic integrity and test credibility



# TRUSTED APPS PROGRAM

It All Starts with the Rubric!

- Designed collaboratively and voted upon by the IMS Global community
- Addresses the criteria of Data Collection, Security, Third Party Data, and Advertising
- Each item is rated as Meets Expectations, Partially Meets Expectations, or Does Not Meet Expectations.

EXPECTATIONS			
Data Collected	Meets	Partially Meets	Doesn't Meet
DCQ1 - Do the policies list all data collected?	Meets	Partially Meets	Doesn't Meet
DCQ2 - Do the policies indicate how data is collected?	Meets	Partially Meets	Doesn't Meet
DCQ3 - Do the policies state who owns the data?	Meets	Partially Meets	Doesn't Meet
DCQ4 - Do the policies allow users to delete their data entirely?	Meets	Partially Meets	Doesn't Meet
DCQ5 - Do the policies state the retention of data?	Meets	Partially Meets	Doesn't Meet
Security	Meets	Partially Meets	Doesn't Meet
SECQ1 - Do the policies state how data is protected?	Meets	Partially Meets	Doesn't Meet
SECQ2 - Do the policies state all confidential & sensitive information is encrypted throughout?	Meets	Partially Meets	Doesn't Meet
SECQ3 - Do the policies state whether or not it enforces strong password creation?	Meets	Partially Meets	Doesn't Meet
SECQ4 - Do the policies indicate whether or not it leverages 2 step (or other forms of multifactor) authentication?	Meets	Partially Meets	Doesn't Meet
SECQ5 - Do the policies state the use of cookies?	Meets	Partially Meets	Doesn't Meet
Third Party Data	Meets	Partially Meets	Doesn't Meet
SHRQ1 - Do the policies list all 3rd parties?	Meets	Partially Meets	Doesn't Meet
SHRQ2 - Do the policies state what information is shared with each 3rd party?	Meets	Partially Meets	Doesn't Meet
SHRQ3 - Do the policies state whether or not users can opt out of 3rd party data sharing?	Meets	Partially Meets	Doesn't Meet
SHRQ4 - Do the policies state whether or not user is notified of a change in third parties?	Meets	Partially Meets	Doesn't Meet
SHRQ5 - Do policies require all 3rd parties to adhere to the terms of the vendor/customer agreement?	Meets	Partially Meets	Doesn't Meet
Advertising	Meets	Partially Meets	Doesn't Meet
ADVQ1 - Do the policies indicate if advertisement	Meets	Partially Meets	Doesn't Meet
ADVQ2 - Do the policies indicate whether or not	Meets	Partially Meets	Doesn't Meet
ADVQ3 - Do the policies indicate whether or not	Meets	Partially Meets	Doesn't Meet
ADVQ4 - Do the policies indicate whether or not	Meets	Partially Meets	Doesn't Meet
ADVQ5 - Do the policies state whether or not use	Meets	Partially Meets	Doesn't Meet

### App Vetting Profiles

This product has been vetted for privacy and security. As an IMS member, you can contribute too!

**Vetted by**  
Kevin Lewis on 02/22/2019  
IMS Global

**Detailed Results**  
VIEW DETAILS  
For v1.0

Email [appvetting@msglobal.org](mailto:appvetting@msglobal.org) with any questions.

ADD AN ENTRY



# TRUSTED APPS

## Data Privacy Seal

### Institutions:

- Seek out suppliers with the IMS Data Privacy Seal
- Require that suppliers without the seal obtain it before procurement
- Include the requirement in their contracts and requests for proposals (RFPs)

### Suppliers

- Certifies that an application satisfactorily completes the rigorous and TrustEd Apps vetting process
- Ratings on the TrustEd Apps Rubric are fully disclosed and meet a specified level of expectations
- IMS staff collaborates with suppliers to address any potential or identified areas of concern



# Adaptive Digital Curriculum

Get the right resource to the right student at the right time

Facilitate more innovative instructional practices and allow for greater choice and flexibility in digital resources by packaging and streamlining the management of learning content from different sources.

- AccessForAll<sup>®</sup>
- Competencies and Academic Standards Exchange<sup>®</sup> (CASE<sup>®</sup>)
- Common Cartridge<sup>®</sup>
- EPUB for Education
- LTI Resource Search
- OpenVideo



# Learning Data & Analytics

Help students succeed and institutions improve with a scalable foundation for actionable data on student learning

Inform student success strategies, institutional academic decisions, and instructional design with clickstream learning data from all your digital resources—available in real-time and viewable using any dashboard.

- Caliper Analytics®
- Edu-API
- Learning Information Services
- LTI Insights

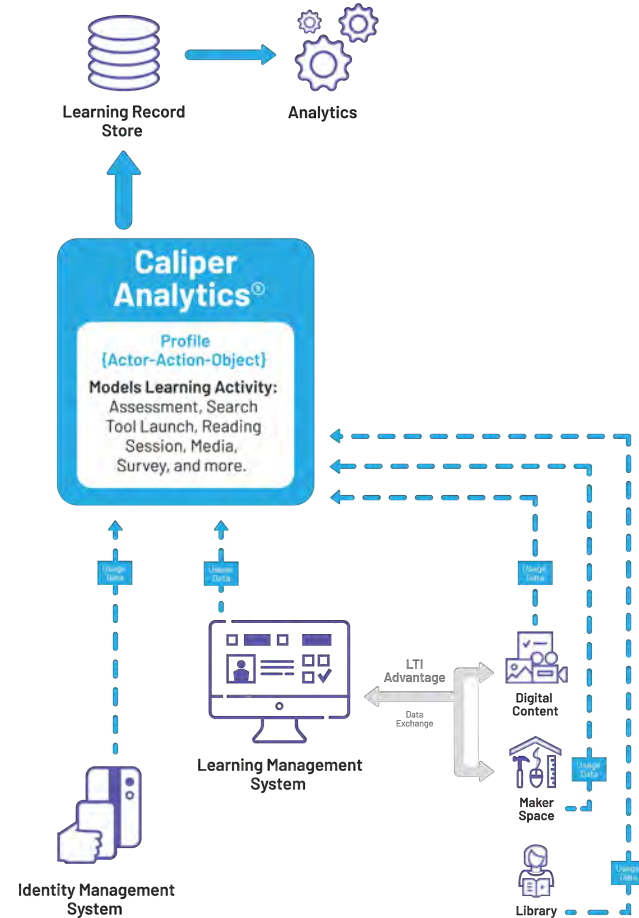




# CALIPER

Real-time educational data and analytics

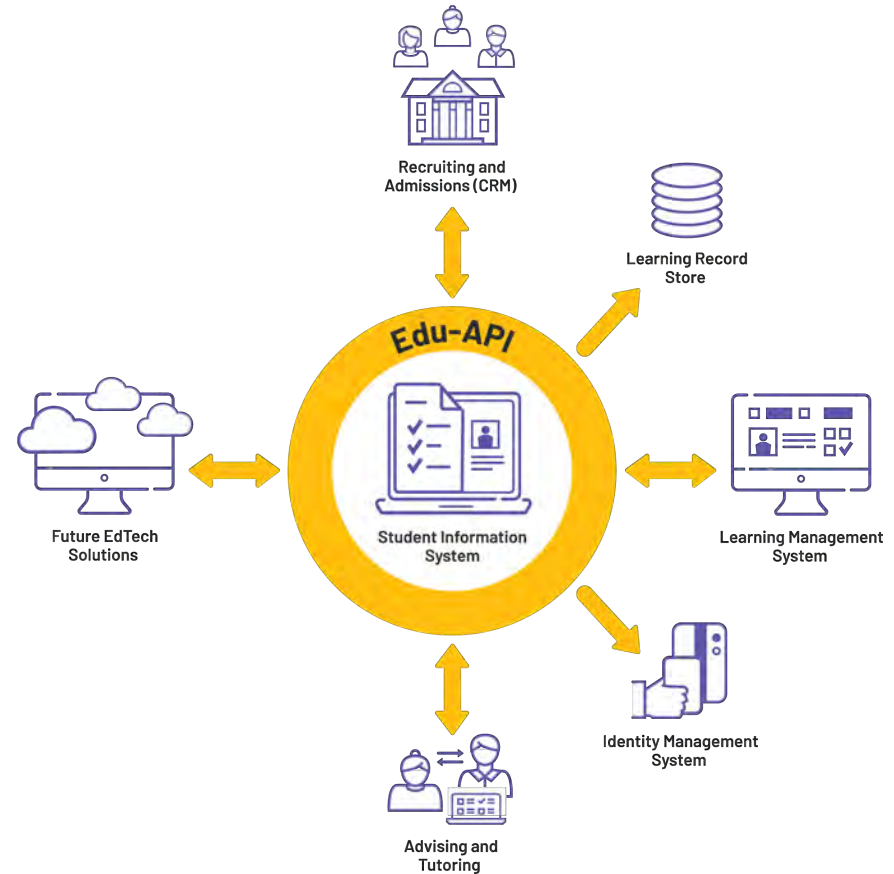
- Enables institutions to collect learning data from digital resources
- Profiles: models a learning activity or supporting activity, domain-specific terms and concepts to describe user interactions
- Sensors: APIs to define basic learning events and standardize the gathering of metrics



# Edu-API

## Connecting the SIS to the Digital Ecosystem

- Provide consistent, secure, standardized interoperability between ERP/SIS and the academic digital ecosystem
- Provisioning and Rostering of core academic data
- Exposure of broader student data to potentially provide key contextual data to repositories/data stores for more meaningful analytics



# RECOGNIZE ACHIEVEMENT

Portrait of lifelong learning

# Digital Credentials

Support competency-based models and connect educational credentials with the full scope of learning achievements and experiences

Digital credentials are reshaping the delivery of education and professional learning by enabling **lifelong learner-control of evidence-based knowledge, skills, and achievements** to respond to today's education and **job market needs**.

- Badge Connect™
- Competencies and Academic Standards Exchange® (CASE®)
- Comprehensive Learner Record (CLR)
- Open Badges
- PIVOT Project
- Wellspring Project

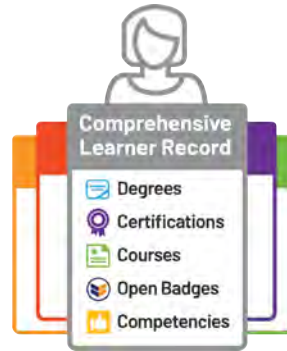


# DIGITAL CREDENTIALS ECOSYSTEM

An education-to-employment ecosystem



Open Badges



Comprehensive  
Learner Record



Competencies &  
Academic Standards  
Exchange (CASE)



# Digital Credentials

Support competency-based models and connect educational credentials with the full scope of learning achievements and experiences

Digital credentials are reshaping the delivery of education and professional learning by enabling lifelong learner-control of evidence-based knowledge, skills, and achievements to respond to today's education and job market needs.

- Badge Connect™
- Competencies and Academic Standards Exchange® (CASE®)
- Comprehensive Learner Record (CLR)
- Open Badges
- PIVOT Project
- Wellspring Project



# OPEN BADGES

Recognize achievement

A digital form of credential containing a verifiable assertion of mastery, achievement or participation with supporting evidence when available.

- Machine Readable
- Scalable
- Verifiable
- Stackable
- Learner Controlled
- Securable

## OPEN BADGES

Data & Information **Inside**

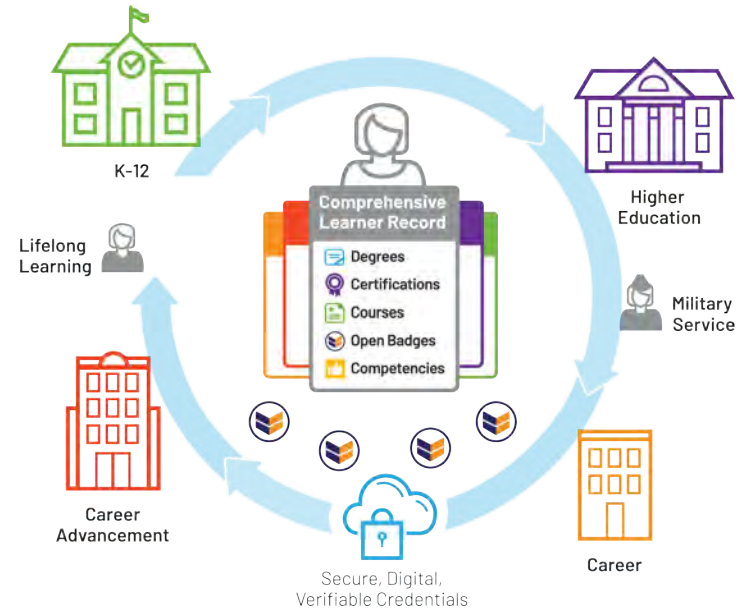
Alignment	Expiration Date
Badge Criteria	Issued Date
Badge Description	Issuer
Badge Name	JSON-LD
Digital Signature	Recipient
Evidence	Verification



# COMPREHENSIVE LEARNER RECORD

Learning happens at every stage of the journey

- New generation of secure and verifiable learning records
- Designed to support traditional academic programs, co-curricular and competency-based education
- Showcase learner records like courses, competencies, skills, internships, Open Badges, in a verifiable and machine-readable format
- Recommended by American Association of Collegiate Registrars and Admissions Officers (AACRAO)
- Key Features
  - Equitable
  - Verifiable
  - Interoperable
  - Portable
  - Secure
  - Private
  - Relevant
  - Transparent



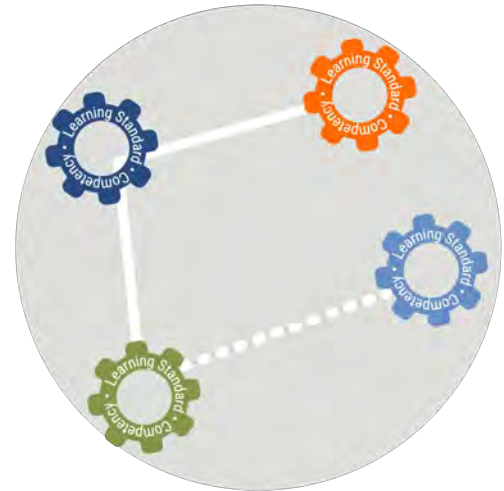


# COMPETENCIES & ACADEMIC STANDARDS EXCHANGE

Your Trusted Source of Digital Learning Standards and Workforce Competencies

Framework for provisioning and transmitting all of the following:

- Competency Framework Documents
  - original competencies or academic standards documents
- Competency Framework Items
  - statements of what the learner will know and be able to do
- Competency Framework Associations
  - relationships between entire standard sets or individual standards and courses
- Competency Framework Rubrics
  - instruments used to delineate performance expectations around a task, product or performance which may or may not be aligned to standards



# MEMBERSHIP

Together, We Will Power Learner Potential

# MEMBER EVENTS

Four meetings per year

- One Executive Conference
  - [Learning Impact Leadership Institute](#)
    - October 2021
    - June 2022
- Three Working Meetings
  - [Technical Congress/August Quarterly](#)
    - Online
  - [Analytics Summit/November Quarterly](#)
    - Online
  - Digital Credentials Summit/Feb Quarterly
    - [February Quarterly](#), 2-5 Feb
    - [Digital Credentials Summit](#), 1-4 March



# Digital Credentials Summit



**Digital** Online Summit  
1-4 March 2021  
**Credentials**  
Igniting the Talent Continuum

Join Us! K-12 • Higher Ed • Corporate Training • Philanthropy • EdTech Suppliers

## IMS Digital Credentials Summit 2021

Online

1-4 March 2021 | Public Virtual Event

### Bridging the Gap With Digital Credentials and Integrated Skills

It's time to think differently about what learners get from their educational experience!

At the Digital Credentials Summit, you'll become part of the educational experience transformation toward a new focus on developing talent and connecting talent to opportunities. Igniting this talent continuum is a diverse set of new mindsets, partnerships, and products. They all revolve around a simple concept—that digital credentials can provide better ways to reward credit and link to opportunities than current paper transcripts, certificates, and resumes.

This cross-sector event is the only one of its kind—bringing together the leading higher education, K-12, business, philanthropy, corporate training, and workforce development organizations. And we're not just exchanging great ideas. We're here to demonstrate substantial progress and plans in community adoption of digital credentials, including digital badges, comprehensive learner records, competency/skills/interest frameworks, blockchain, and the required combinations of these enabling technologies.

This virtual event is free to **IMS member organizations**, but also open to non-members for a registration fee.

gimpact | [msglobal.org](http://msglobal.org)  
Consortium, Inc. All rights reserved.



# MEMBER COMMUNICATION

Staying informed

- Bi-Weekly Technical Activity Call Reminders
- Forum Notifications
- Mailing List for Notifications, Press Releases
- Monthly Community Dispatch Newsletter
- [HED News & Notes](#)



# WEBSITE AND ACCOUNTS

Unlocking member only resources

- [www.imsqglobal.org](http://www.imsqglobal.org)
  - Login to see member only work activities and get notifications for Members
  - Anyone from your organization can have a website account. Either create account themselves, or we can create it.
- [www.imscert.org](http://www.imscert.org)
  - Directory of Conformance Certified Products
  - App vetting profiles

# Product Directory

Enabling secure and interoperable digital learning ecosystems

## PRODUCT DIRECTORY

This is the *official listing* of products that have passed IMS Global interoperability certification. Using certified products will enable your institution to achieve the benefits associated with IMS.

Certified products listed in this directory are guaranteed to meet the IMS standards for which they have passed testing. If you experience an integration issue with a certified product listed here, IMS will work with the supplier to resolve the problem.

Non-certified products are also included when app vetting data is available.

IMS GLOBAL®



Current Registrations:  
imscert.org

Search for products or organizations

4,713 results discovered in 2ms

### Academic Competencies Management Tool v1.0

By LearningMate Solutions Private Limited

Competencies and Academic Standards Exchange (CASE) Service v1.0

CERTIFIED PRODUCT VETTED

### Academic Writer v1

By American Psychological Association



#### IMS STANDARDS

- Caliper Analytics 13
- Common Cartridge 2982
- Competencies & Academic Standards E... 8
- Data Privacy 30
- Learning Information Services (LIS) 1
- Learning Tools Interoperability (LTI) 258
- OneDroptor 326

## AEFIS

by AEFIS

An IMS Contributing Member

campus-wide  
AEFIS Solutions  
Curriculum Mapping + Outcomes Alignment  
Outcomes Assessment + Evidence Collection  
Outcomes Transcript + Competency Portfolio  
Self Study + Accreditation Reporting  
Strategic Planning + Data Collection  
Faculty Activity + Curriculum Vitae

<http://www.aefis.com/> org/br

### IMS Certifications

AEFIS has completed testing for this product:

v3.53 v3.51 v3.41

AEFIS v3.53 has completed conformance testing for the following IMS Standard:

**Open Badges v2.0**

Certified on 2020-02-11 • Registration Number: 84502a30359d

Open Badges Type:

• Issue

### App Vetting Reviews

View the App Vetting Review Scores Data to learn more or email [qa@imsglobal.org](mailto:qa@imsglobal.org) with any questions.

Vetted By

Kevin Lewis on 2019-07-03

Project Manager at IMS Global

Detailed Results

VIEW DETAILS

Kevin Lewis on 2019-07-03

Project Manager at IMS Global

VIEW DETAILS

As an IMS Member, you can contribute too!

ADD AN ENTRY

### Integrations and Deployments

The product has been successfully tested and deployed.

ADD AN ENTRY

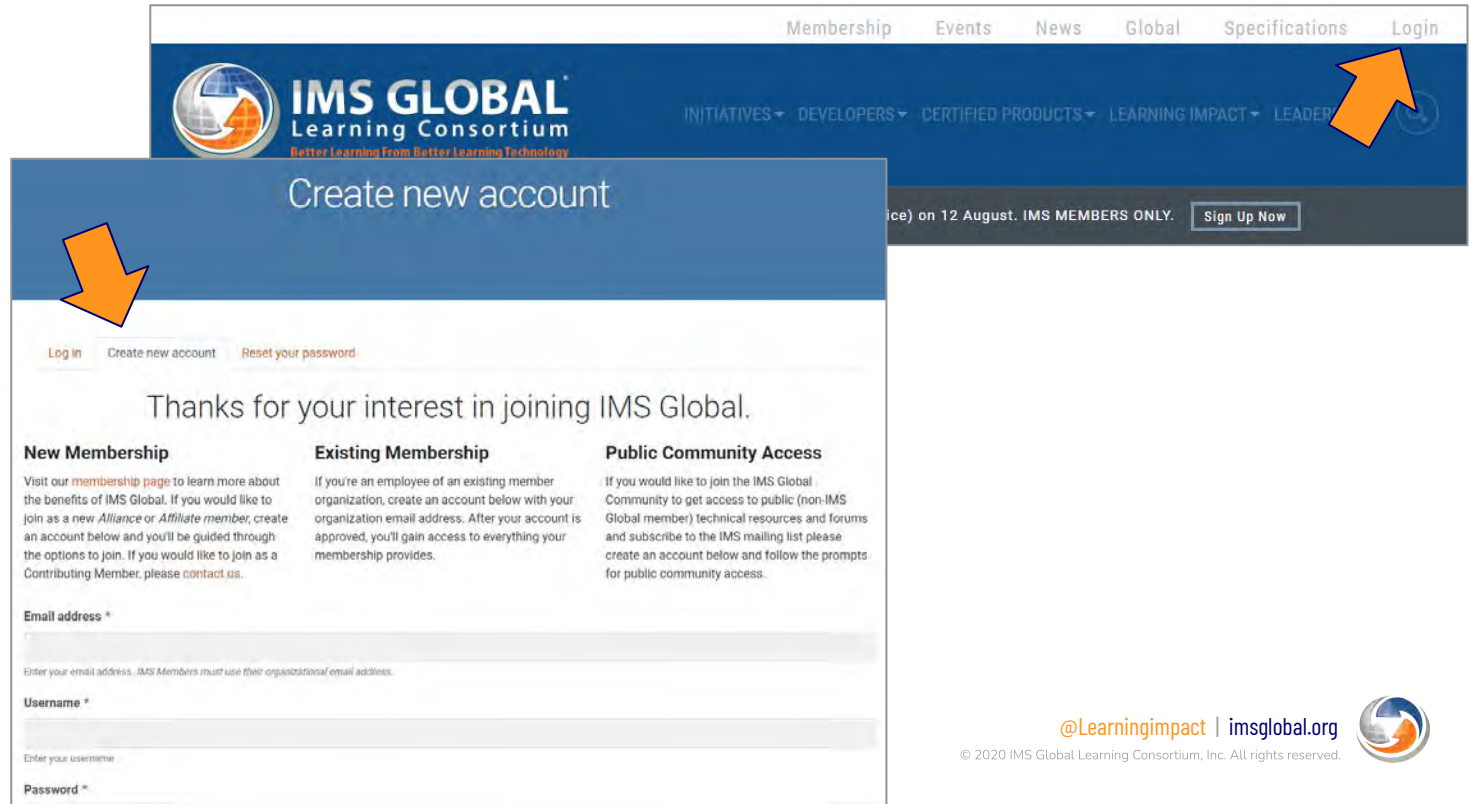
@LearningImpact | imsglobal.org

© 2020 IMS Global Learning Consortium, Inc. All rights reserved.



# CREATING AN ACCOUNT

Unlocking member only resources



Membership Events News Global Specifications Login

**IMS GLOBAL**  
Learning Consortium  
Better Learning From Better Learning Technology

INITIATIVES ▾ DEVELOPERS ▾ CERTIFIED PRODUCTS ▾ LEARNING IMPACT ▾ LEADERSHIP ▾

Log in on 12 August. IMS MEMBERS ONLY. [Sign Up Now](#)

## Create new account

[Log in](#) [Create new account](#) [Reset your password](#)

Thanks for your interest in joining IMS Global.

### New Membership

Visit our [membership page](#) to learn more about the benefits of IMS Global. If you would like to join as a *new Alliance or Affiliate member*, create an account below and you'll be guided through the options to join. If you would like to join as a Contributing Member, please [contact us](#).

### Existing Membership

If you're an employee of an existing member organization, create an account below with your organization email address. After your account is approved, you'll gain access to everything your membership provides.

### Public Community Access

If you would like to join the IMS Global Community to get access to public (non-IMS Global member) technical resources and forums and subscribe to the IMS mailing list please create an account below and follow the prompts for public community access.

**Email address \***

Enter your email address. IMS Members must use their organizational email address.

**Username \***

Enter your username

**Password \***





# MY IMS

Where to start



## Membership Dashboard

### Membership

Your current IMS Membership Level is **Affiliate Member**.

As an **Affiliate Member**, you have access to the full community of developers and end-users to collaborate on tools, techniques, and trials of distributed learning products and delivery systems.

Your organization's participation in IMS is governed, in part, by the [IMS Intellectual Property Rights \(IPR\) Policy](#).

Ready to take your edtech to the next level? For access to even more resources, consider upgrading your membership.

[UPGRADE YOUR MEMBERSHIP](#)

### Getting Started with IMS

[Learn more about about the benefits of IMS Membership!](#)

With your support, the digital ecosystem continues to thrive. If you have questions about your membership, please [contact me](#).



**Kelly Hoyland**  
Higher Education Institutional Program Manager  
[khoiland@imglobal.org](mailto:khoiland@imglobal.org)

[WATCH A TOUR OF THE IMS WEBSITE](#)

### Member Newsletter

Read the latest edition of the [monthly member newsletter](#) that provides a recap of IMS news, big announcements, upcoming events, recent

[Accessing Member Benefits](#)



[Tour of the IMS Website](#)



# FORUMS

Staying connected

**Forums**

IMS Forums provide a place to ask questions, catch up meeting minutes, and more.

**General**

- IMS Europe Formation
- Executive Board on Assessment
- Contributing Member General Forum
- IMS Presentations

**Higher Education**

- Higher Education Leadership
- Higher Education Innovation Leadership Networks
- Higher Education Discussion/Q&A/Resources

**K-12**

- K-12 Meeting Agendas and Minutes
- K-12 Discussion / Q&A / Resource Share
- K-12 Leadership Meeting

[VIEW ALL IMS FORUMS](#)

**Email Notifications**

In addition to the "IMS News and Updates" subscription, you can opt into notifications for the following areas.

- **Forum notifications** - Get email alerts for new content posted in the forums.
- **Content notifications** - Get email alerts for new content posted in about our *Initiatives* and *Technical Activities*

If you've opted into any of these content alerts, you can tell us how frequently to notify you below.

**Email Alerts**

If you opt-in to receive notifications about changes to content, how often should we deliver the notifications?

N/A

**Instant**

Daily

Weekly

← Check your profile setting

Higher Education Innovation Leadership Networks			
Digital Credentialing & CBE Innovation Leadership Network	30	34	By KellyHoyland Mon, 05-Oct-2020 15:35
Adaptive Learning Innovation Leadership Network	14	15	By KellyHoyland Thu, 22-Oct-2020 14:45
Accessibility Innovation Leadership Network	35	37	By CarrollBrown Thu, 01-Oct-2020 16:30

← Turn on Alerts



# WE'RE HERE TO HELP

Higher Education Team



**Sandra DeCastro**  
Vice President  
Community Programs  
sdecastro@imglobal.org



**Cary Brown**  
Director  
Higher Ed. Programs  
cbrown@imglobal.org



**Kelly Hoyland**  
Institutional Prog. Manager  
Higher Ed. Programs  
khoyland@imglobal.org

