

# ACCELERATING STEM STUDENT PATHWAYS WITH CREDIT FOR PRIOR LEARNING Summer Workshop Summary

## WORKSHOP FINDINGS:

A condensed summary of the key workshop takeaways based on the workshop agenda



The value proposition for accelerated degrees both in terms of prior learning assessment and developing specific degrees in BAS feeders is not yet fully developed.



Improving awareness of the opportunity provided by ACPL is needed at the student and institutional level. This is one element that can improve student equity.



NWCCU removal of 25% limit on ACPL has created a vacuum between local policies and SBCTC. This is an opportunity for guidance.



ACPL Standards are currently at program or department level. Better guidance with support from stakeholders statewide would improve consistency.

## INTERIM ACTIVITY:

Since the workshop we have met with additional stakeholders to share the key findings and investigate the most tangible next steps. This includes meetings with the incoming BLC President, and the Washington Student Achievement Council (WSAC).

These meetings led us to propose three follow ups to advance ACPL across the state, based on what we heard in the workshop.

## NEXT STEPS:



Propose ACPL development is advanced via communities of practice within BLC. Based upon feedback we propose beginning with Cybersecurity and Administrative Management BAS programs.



Supporting WSAC's ACPL workgroup we propose to support the development of an ACPL toolkit to serve as a knowledge repository and best practice guide across the state.



Support creation of a working group within WCERTE to forward ACPL, particularly with a focus towards statewide BAS programs.

# ACCELERATING STEM STUDENT PATHWAYS WITH CREDIT FOR PRIOR LEARNING

## Agenda

### DAY ONE:

#### PANEL:

Perspectives on Accelerated Pathways

#### BREAKOUT GROUPS:

Developing an accelerated degree at your institution

#### BREAKOUT GROUPS:

Creating best practices for STEM prior learning credit

#### WORKING LUNCH:

Lessons learned building an accelerated STEM degree through COVID & CTC Link

### DAY TWO:

#### CHECK-IN AND RECAP

#### BREAKOUT GROUPS:

Moving the needle on accelerated STEM degrees statewide

#### BREAKOUT GROUPS:

Articulations

### PANEL VIDEO :

#### Perspectives on Accelerated Pathways

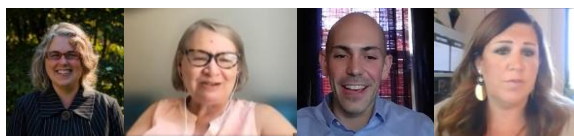
**Moderator:** Alison Pugh, Dean Math, Science and Business, South Seattle College

#### Panelists:

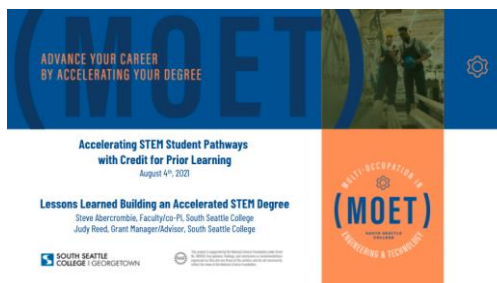
Dr. Debra D. Bragg, Founding Director, UW CCRI

Wilson Finch, VP Initiatives, CAEL

Cary Ingram, Education Services Specialist, JBLM



### LESSONS LEARNED VIDEO:



### RESOURCES:

Washington Student Achievement Council, ACPL:

<https://wsac.wa.gov/assessments-prior-learning>

CAEL 2020 Report: [The PLA Boost](#)

Lifting of 25% limit for transfer and CPL:

[NWCCU 2020 Standards](#)

SBCTC Working Group Recommendations for

ACPL: <https://www.sbctc.edu/resources/documents/colleges-staff/commissions-councils/dgc/academic-credit-for-prior-learning-pla-final.pdf>



This project is supported by the National Science Foundation under Grant No. 1800937. Any opinions, findings, and conclusions or recommendations expressed on this site are those of the authors and do not necessarily reflect the views of the National Science Foundation.