

Workforce Education **Summer Collaboration** 2017

August 21st - 23rd
McGavick Conference Center
at Clover Park Technical College



WASHINGTON'S
COMMUNITY & TECHNICAL COLLEGES

Welcome!

Welcome to the Workforce Education Summer Collaboration! We have been working hard to put together three days full of information, networking and, of course, a lot of collaboration.

The focus of this year's Collaboration is on the student service programs and strategies we use to help workforce students get started, persist and complete a workforce program that will move them towards sustainable-wage jobs and careers.

The topic couldn't be more timely. Ongoing statewide initiatives regarding equity and inclusion, strategic enrollment management, completion, and redesigning our systems to put students at the center all benefit from the expertise, resources, and commitment you each bring to your campuses.

Knitting together a single system across program and functional areas that relentlessly puts students at the center isn't easy or simple work. It requires a commitment that will withstand the often slow and messy process of figuring out how to make different resources, rules and performance requirements work collectively towards our goals, and not against them.

That is why each of you are here. You are the perfect people to work together to help connect financial aid, workforce education, basic education for adults and other student service programs, all in the name of helping workforce students find success on our campuses across the state.

Thank you for being here!

SBCTC Workforce Education Staff

Day 1

10:00 am

Welcome

Dr. Joyce Loveday

President, Clover Park Technical College

10:15 Framing the Conversation

Reflections on the importance of our work and the challenges ahead.

Derek Kilmer, US Representative

Michele Johnson, Pierce District

Alison Fernandez, Skagit Valley College

Kevin McMicheal, *former student*

Nancy Dick, SBCTC

1:00

Collaborating

Across Programs

BEEdA Jon Kerr

Worker Retraining Katherine Mahoney

Opportunity Grant Ruben Flores

WorkFirst Jennifer Dellinger

BFET Erin Fraiser

Perkins Anna Nikolaeva

4:30 - 6:00 Connecting Across the System

*Many thanks to Walla Walla, South Seattle,
Bates, Tacoma, Pierce, Skagit Valley &
SBCTC!!!*

Day 2

7:30 am Breakfast

8:30 Keynote & Practice

Sarah Fisk

Why can collaboration be so hard, and what does it take to be successful at it? We'll get inspired as we also get a chance to practice some concrete skills that will help us tackle the work at hand: collaborating across programs.

12:00 pm Lunch

1:00 Exploring Student Processes

Teams will work together to explore the student experience accessing non-instructional support and begin to identify areas for increased collaboration.

5:00 End of Day

Dinner on your own.

Please remember to sign-in each day!

Day 3

7:30 am

Breakfast

8:30

Creating Next Steps

Continue Day 2 work in college teams.

10:30

Capstone Conversation

Jan Yoshiwara,

Executive Director, SBCTC

Chris Reykdal, Superintendent of

Public Instruction

12:00 pm

Lunch

1:00

Deep Dive Breakouts

Check the next page for more information about each breakout.

4:00

End of Conference

Please remember to sign-in each day!

Day 3 Breakouts

1:15 — 2:30 pm

Time and Effort Overview — Michele Rockwell

Federally mandated, time and effort reporting can be a headache. Michele will go over the requirements and help you keep your college in compliance.

Room 303

Perkins Accountability — Anna Nikolaeva

Anna will take a deep dive into how Perkins works — including different activities under Perkins, how funds are allocated and how performance is measured.

Room 301

Making Enrollment Count — Autumn Yoke

How can we make sure every enrollment is counted? Autumn will cover the key questions to ask to make sure your college gets credit for your students' efforts.

Room 302

Finding Great Labor Market Tools — Doug Tweedy

ESD has been building tools that the whole workforce system can use to understand the labor market around them. Get a tour on high quality tools that are free to use.

Room 209

Day 3 Breakouts

2:45 — 4:00 pm

Apprenticeship 101 — Holly Moore & Peter Guzman

Just how do you go about starting an apprenticeship program? Learn the basics about apprenticeship and start planning how to bring it to your campus.

Room 209

I-BEST: Inclusive Workforce Programming — William Durden

Serving workforce students in I-BEST programs benefits students and colleges alike, especially as we implement Guided Pathways. How can workforce programs partner more fully with this best practice?

Room 302

CTCs and the Workforce System — Erin Fraiser

What is the workforce development system in Washington, and how do we fit into it? Where are there opportunities for to best serve our students and our communities?

Room 301

Building Great Advisory Committees

Jamie Wells and Shana Peschek from our Centers of Excellence will give you some tools to think about how to ensure employer engagement on your advisory committees.

Room 303

Special Guests



Derek Kilmer is in his third term as the US Representative for Washington's 6th congressional district. He sits on the House Appropriations Committee as Vice Ranking Member, serves as Vice Chair for Policy in the New Democrat Coalition, and is Democratic Co-Chair of the Bipartisan Working Group. Derek grew up on the Olympic Peninsula and works to promote local economic development that creates quality jobs and the responsible stewardship of our natural resources.

Dr. Michele Johnson has served as chancellor and CEO of Pierce College since 2005. Her focus is to build and sustain an organization centered on student success. She believes the college's mission should drive decision-making, resource allocation, and assessment at all levels, and that mission is all about student success. She is most proud of the work the college has done to increase student success rates, resulting in national recognition for Pierce's innovation and hard work.



Alison Fernandez is currently the Director of Advising and Retention at Skagit Valley College. She oversees BFET, Opportunity Grant, WorkFirst, Worker Retraining, Early Achievers and I-CATCH grants, as well as SVC's Early Alert program, First Quarter Experience Navigation and the Navigation support model. Her focus is on promoting access, support and completion for all students.

Kevin McMichael was a dislocated worker who was able to return to school to pursue an AA in Criminal Justice at Pierce College. He earned his degree in 2011, and began working for Dept. of Corrections' Correctional Industries Printshop. While working, he continued to work on his B.A. in Law & Justice. He now oversees the license plate, tab shop, print shop, and janitorial cleaning product programs. He also serves on Pierce College's Criminal Justice program advisory board.



About Sarah Fisk



Sarah Fisk, PhD is an organization development consultant specializing in design and facilitation of multi-stakeholder group processes and collaborative systems change. Since 1992, her caseload has included public service organizations, consulting firms, and small and large businesses. She has worked with United Nations, University of California, Kaiser Permanente, Medecins Sans Frontieres (Doctors Without Borders), World Bank, Wildlife Conservation Network, Lewa Conservancy, Vulcan Aerospace Corporation, The Burning Man Project, Global Footprint Network, Pew Family Trust, Sea Shepherd Conservation Society, Fisheries Leader-

ship and Sustainability Forum, San Francisco Controller's office, March of Dimes, SanDisk, VISA International, Electronic Arts, Hewlett-Packard, Charles Schwab & Co., Inc., Agilent Technologies, Mercer-Delta, Evolve Consultants, Symantec, and more than 100 other foundations, agencies, school districts and organizations.

Sarah is co-author of **Facilitator's Guide to Participatory Decision-Making**, (Jossey-Bass, 3rd edition 2014). She has taught the facilitation of collaboration to thousands of people and consulted on participatory initiatives in England, Germany, The Netherlands, Spain, France, The Philippines, Kenya, Fiji, and throughout the United States and Canada. She has served as adjunct professor at CIIS and has been a featured speaker at many professional conferences, including International Association of Facilitators, Organization Development Network, and the Applied Improvisation Network. Sarah earned a BA (with high honors) from Harvard University, and an MA and PhD in Clinical Psychology from The Wright Institute.

In 1995, Sarah joined **Community At Work**, a San Francisco-based consulting firm, and is currently a Senior Associate there. She is also the founder of **Leading Collaboration**, where she is lead consultant, and co-founder of **Community Conservation**, a non-profit focused on developing local, environmentally sustainable livelihoods in the face of climate change.

Your SBCTC Team

Kim Wheeler is the administrative backbone for the Workforce Education department. She has been a member of the team since 2016. Kim has 10 years of personnel and human resources experience in the military. She studied to be a paralegal professional at Kaplan University.



Kendra Hodgson has been a policy associate since October 2012. Her work focuses on industry-specific training programs, such as aerospace and health care, as well as veterans initiatives and the Worker Retraining program. Kendra has spent many years in the workforce development system both at a local level and as a monitor for state and federal workforce programs for the Employment Security Department. Kendra holds a B.S. in psychology and a M.Ed. in counseling.

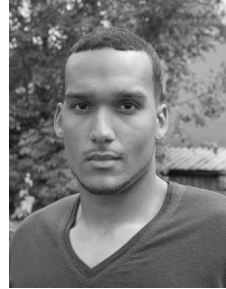
Peter Guzman is a policy associate for economic development. Currently, Peter is focused on advancing registered apprenticeship as a workforce development strategy that increases both college enrollments and student success. He also manages Washington's Centers of Excellence that work to eliminate skills gaps in key. Peter joined SBCTC in 2016 after 19 years with the City of Tacoma, where he helped grow apprenticeship in public works construction projects. Peter studied Political Science at Westmont College and Law at the Santa Barbara College of Law, both in California.



Jennifer Dellinger is a program administrator focused on WorkFirst. She brings more than nine years of experience in our college system, including time in Student Services and Financial Aid. Most recently, she was the program coordinator for WorkFirst and BFET programs at Peninsula College. Jennifer was a previous TANF recipient and WorkFirst student at Peninsula, where she earned degrees in Administrative Office Systems and an Associates in Arts. She is currently working on her Bachelors in Policy and Public Administration.

Your SBCTC Team

Mason Norman is Workforce Education's program coordinator. His primary functions include program approval administration, Early Achievers Grant manager, and participating in policy discussions. Mason brings over 7 years of experience in Military Intelligence, serving as a Staff Sergeant in the U.S. Army Reserves with one combat deployment. He has his Associates of Applied Science degree in Intelligence Operations, and is currently attending Central Washington University majoring in Information Technology and Administrative Management with a Minor in Cyber Security.



Danny Marshall is a program administrator, focusing on apprenticeship issues for our college system and supporting the Centers of Excellence. Danny served students at Pierce College for 13 years as an advisor, Job Connections and Worker Retraining manager, and as a part-time faculty in communications, theater and psychology. Prior to joining the college system, Danny worked in Indian Education Programs as well as planning and research for the Tacoma Police Department.

Nancy Dick is the Director of Workforce Education. She and her team work to promote quality educational opportunities and outcomes for students enrolled in professional-technical programs in fields ranging from advanced manufacturing to allied health to technology. Prior to coming to the State Board in 2015, she was multimedia faculty and a Dean of Instruction. She holds a Master of Communication in Digital Media and is a 2017 graduate of the Washington Education Leadership Academy. Nancy is interested in how a 21st century education can lead to living-wage jobs and help close the nation's skills and equity gaps.



Katherine Mahoney is a program administrator with primary responsibility for the Worker Retraining program. She brings 15 years experience in workforce development, with experience cutting across the private, public and nonprofit sectors. At SBCTC, Katherine has worked on topics like Centers of Excellence, WIOA, math pathways, leadership development, Start Next Quarter, and competitive workforce grants. Katherine holds a M.S. in Management and Leadership.

Your SBCTC Team



Anna Nikolaeva is a Program Administrator, managing Perkins, Job Skills, and Customized Training programs. Anna joined the State Board staff in 2012, after spending more than a decade in employer development and career counseling on university and community college campuses. Anna holds a Master's Degree in Higher Education Administration from the University of Michigan and a Bachelor of Arts in International Studies and Communication from The College of St. Scholastica in Duluth, MN.

Erin Frasier is a Policy Associate. Her work is focused on issues concerning access to education and support services for low-income populations, specifically in the WorkFirst and BFET programs. She has over 10 years of experience in the community college system, as both faculty and administrator in workforce, continuing education and basic education. Erin recently completed her Doctorate of Education in Organizational Leadership after publishing research focused on the labor market responsiveness of Washington's CTC system.



Mat Carlisle is the Program Administrator for the Basic Food Employment and Training (BFET) and Resources to Initiate Successful Employment (RISE) programs. He joined SBCTC in 2013 after serving workforce students at Grays Harbor College for several years, where he taught job and life skills courses as well as coordinator for WorkFirst and BFET. In addition to a B.S. in Aerospace Engineering and a Th.M. from Dallas Theological Seminary, Mat is a trained facilitator for several programs, including Bridges Out of Poverty and the College Achievement Alliance.

Kathy Goebel is a policy associate and has been with SBCTC for several years in a variety of roles. She really enjoys her work in the workforce education department. Currently Kathy is focused on K-12 connections, including dual credit for CTE students and Perkins funding. She is the liaison for the Workforce Education Council, system lead for early learning and paraeducation programs, and has been working with colleges to improve program approval, prof-tech common courses, and faculty certification processes and tools.

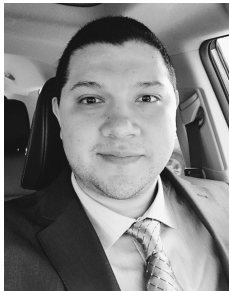


Your SBCTC Team



Michele Rockwell is a contracts specialist where she works with the grants and contracts that the Education Division awards. She has been at SBCTC since 2001. Michele has a background in workforce programs having served the workforce education department throughout her career. She is a big believer in community colleges and eLearning, having earned an AAS from Pierce College's military locations and a B.S. from Oregon State University's eCampus.

Jon Kerr is the Director of Adult Basic Education. He joined SBCTC after his tenure as the Dean of Instructional Programs and Library Director at Lower Columbia College. There he pioneered the first Academic I-BEST program and administered ELL, ABE, high school and GED programs aimed at moving students into family-sustaining jobs. Jon has become a champion for accelerated educational pathways, and is active at state and national levels. He holds undergraduate and graduate degrees in education and theater.



Ruben Flores is a policy associate for Student Services. He administers the Opportunity Grant program and provides policy analysis and support for a wide range of student services. Ruben has a long history in community college financial aid offices, having started out as a work-study student. Most recently, he was the Director of Financial Aid and Veterans Services at South Puget Sound Community College. Ruben is a veteran of the US Navy and holds an MS in Clinical Mental Health Counseling.

Autumn Yoke is the Policy Associate for Enrollment Policy and Reporting. She has been with SBCTC since 2016. Autumn was previously at UW serving undergraduate and graduate students as an admissions and recruitment coordinator, an advisor, and a Divisional Director of Academic and Instructional Services. There, Autumn became more interested in policy and institutional decision-making, inspiring her to earn a Master of Public Administration with a specialization in higher education policy.



Your SBCTC Team

William Durden is the Policy Associate for Guided and I-BEST Pathways for the BEdA department. Will is focused on ensuring all adult Washingtonians have access to innovative, high quality education that will help them secure family-sustaining employment. He is responsible for supporting and scaling I-BEST and guided pathways, with BEdA as the foundation for those pathways. He also supports national adoption of I-BEST, providing training to 33 states and counting. Formerly an I-BEST instructor, William also holds a M.A. in English Studies.



Maryam Jacobs is our Systems Internal Auditor, performing fiscal, legal compliance, grant, and civil rights reviews at all of our community and technical colleges, as well as private colleges and nonprofits receiving funds from SBCTC. She has worked as an auditor for Washington state since 2001, and has experience in financial statement, federal, performance, and legal compliance audits, as well as fraud investigations. She has specialized in higher education since 2006. Maryam is a CPA and has a BBA in accounting.